

Boutique
Camping

WHERE WILL YOUR
ADVENTURE
TAKE YOU.

INSTRUCTION MANUAL



LUNA BELL TENT

OXFORD 100

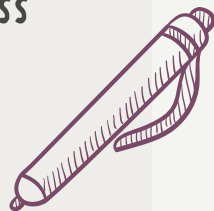
GOOD
TIMES



SCAN HERE
FOR VIDEO
TUTORIAL!

COMPONENTS CHECKLIST

- TENT WITH ATTACHED GUY ROPES *and* GOUNDSHEET
- TENT BAG
- RUBBER MALLET
- FULL SET OF STEEL PEGS
- XI CENTRE POLE
- XI FLEXI DOOR POLE
- X10 STRAIGHT FIBREGLASS FLEXI RIB POLES
- INSTRUCTION MANUAL
- SPARES BAG





GETTING TO KNOW YOUR TENT



INTEGRATED POLE LOOP

To hang a chandelier, inner tent, lighting or other decor!

PLASTIC LOOPS

To attach an inner tent or hang fairy lights! (2023+ model only)

FABRIC

Treated with UV, rot and water repelling agent.

MESH VENTS



LARGE ROUND MESH WINDOWS

With zippable flaps. New models have ropes to peg down at an angle to redirect rainpour and allow ventilation with privacy.

FLEXI FIBREGLASS WALL RIBBING POLES

For extra structural support.

ARCHED CANOPY OVERHANG

To shelter doorway and redirect rainpour.

GUY ROPES

- ✓ Reflective to minimise tripping hazards
- ✓ Adjust via savvy toggles
- ✓ Use rebar pegs (grooved) to secure

ZIPPABLE GROUND SHEET

If pitching your tent as a stand-alone shelter, unzip the groundsheet AFTER the tent has been erected.

ENTRANCE POINT

Create a seamless entry and use standard pegs (smooth) to flatten the groundsheets' entrance point.

ELECTRIC HOOK UP FLAP

(2023+ model only)
Use the savvy zipped-flap to safely thread electrical wires into your tents' living space.



SEE MAINTENANCE AND TLC PAGE FOR TIPS ON CLEANING AND RE-PROOFING!





PLOT PREPARATION + PITCH PERFECTION




ACHIEVING PITCH PERFECTION



- ✓ Ensure your plot is flat and bump free, uneven surfaces or hill tops may apply too much uneven tension and result in damage.
- ✓ Avoid pitching your tent under trees unless you have a tent protector cover or shelter.
- ✓ Pitching your tent on a groundsheet protector will not only guide you when erecting your tent, but it will also protect the groundsheet from dirt, water and condensation.
- ✓ Before securing down the pegs, zip all doors closed.
- ✓ Kinks and creases in the fabric suggest that the tension in the tent is uneven and can result in damage. When pitching your tent, ensure that the poles are straight and guy ropes are adjusted accordingly.
- ✓ The groundsheet zip must be concealed and hidden by the skirt of the tent.

ONCE IT'S UP..



- ✓ Frequently check that the pegs are secured tightly and have not become loose, this is particularly important after wet weather as the grounds will become soft.
 - ✓ Air your tent out daily to increase the ventilation. This can be done by opening up the doors and windows.
 - ✓ If you spot any marks, dirt or mildew spots, tackle them right away to prevent the issue from staining or spreading.
- 





PITCHING YOUR LUNA BELL TENT

IF THE GROUNDS ARE DRY + YOU ARE STRUGGLING TO HAMMER YOUR PEGS INTO THE GROUND, DRENCH THE DRY AREA WITH WATER FIRST!

TOP TIP!

1



1A. UNPACK YOUR TENT + LAY IT OUT WITH THE GROUND SHEET FLOOR FACING.

1B. MAKE SURE THE GROUND IS FLAT + FREE FROM SHARP OBJECTS.

1C. FIND THE DOOR + ROTATE TO FACE THE DESIRED DIRECTION.

2A. KEEPING THE TENT FABRIC ON TOP OF THE BASE, STRETCH OUT THE GROUND SHEET TO FORM A PERFECT CIRCLE.

2B. LOCATE THE ELASTIC RINGS + THREAD THE STANDARD PEGS (SMOOTH) THROUGH THE RING + THE EYELET TO FIX YOUR BASE TO THE GROUND.

2C. SPREAD THE ROPES + USE THE SLIDERS TO SHORTEN EACH ROPE TO APPROX. 1M IN LENGTH.

2



3



3A. LOCATE THE CENTRE POLE + BRING INSIDE THE TENT.

3B. PUSH THE POLE UPWARDS INTO THE CONE (THIS WILL BE THE POLE END WITH THE INTEGRATED LOOP) + ERECT IT VERTICALLY.

3C. ENSURE THAT THE POLE IS STRAIGHT + LOCATED AT THE CENTRE POINTS OF BOTH THE GROUND SHEET + ROOF.

4A. ONE BY ONE, CONNECT TOGETHER EACH WALL RIB (THESE ARE THE FIBREGLASS STRAIGHT POLES, BROKEN DOWN INTO X3 PARTS).

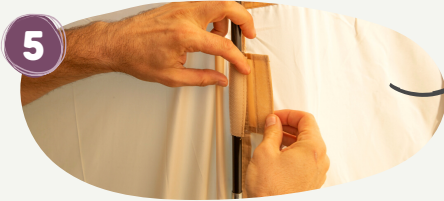
4B. THEN, BRING THEM INSIDE THE TENT.

4





PITCHING YOUR LUNA BELL TENT



5

5A. TAKE AN ERECTED RIB + INSERT THE TOP INTO THE POCKET LOCATED AT THE TOP OF EACH WALL SEAM.

5B. SECURE THE FULL LENGTH OF THE RIB TO THE TENT WALL BY USING THE VELCRO TO TIGHTLY STRAP INTO POSITION.

6A. SLOT EACH RIB FOOT FIRMLY ON THE GROUNDSHEET AT THE CREASE POINT OF WHERE THE FLOOR ENDS + WALL BEGINS.



6



7

7A. THREAD THE FLEXI DOOR POLE THROUGH THE SLEEVE ON THE DOOR OVERHANG.

8A. SLOT THE FEET OF THIS POLE INTO THE BLACK POCKETS ON EITHER SIDE OF THE DOOR.



8



9

9A. ZIP THE DOOR CLOSED + LOCATE THE REBAR PEGS (GROOVED.)

9B. ONE BY ONE, PEG THE GUY ROPES DOWN AT LEAST 1M DISTANCE FROM THE TENT.



10

10A. ONCE ALL PEGS ARE DOWN, ADJUST THE GUY ROPES USING THE SLIDERS TO CREATE AN EVEN TENSION + A CREASE FREE, ROUNDED FINISH.

10B. FOCUSING ON THE MIDDLE ROPE WILL HELP ENHANCE THE CURVED WALL SHAPE + SMOOTH OUT ANY KINKS.



DRESSING YOUR LUNA BELL TENT



HERE'S SOME INSPO!



RECOMMENDED BC ADD-ONS



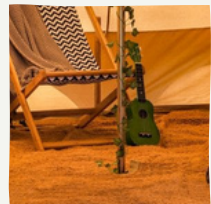
CENTRE POLE
TABLE



GROUNDSHEET
PROTECTOR



CHANDELIER



MATTING



PACKING AWAY & STORING YOUR TENT

It is VITAL that your tent is only stored once it is bone dry. If you store your tent whilst it's damp or wet, it may be affected by mildew. This can result in deterioration of the tents' fabric.

It's perfectly fine to take down your tent whilst it is still wet. However, you **MUST** ensure to hang it up to dry within 48 hours. This can be achieved by hanging the tent on a washing line, or equivalent, and leaving it to air dry. Separating the groundsheet will speed up this process.



- 1A.** REMOVE ALL PEGS. YOU CAN USE YOUR HANDS, A PEG EXTRACTOR OR EVEN ANOTHER PEG.
- 1B.** IF PEGS ARE DIRTY, CLEAN BEFORE PUTTING THEM BACK IN THEIR BAG.
- 1C.** REMOVE POLES FROM THE TENT + IF NECESSARY, ALSO GIVE THEM A CLEAN AND TOWEL DRY.
- 1D.** KEEP THE FABRIC ON TOP OF THE GROUND SHEET + NOT IN CONTACT WITH THE GRASS/GROUND.

2A. WITHOUT STANDING ON THE FABRIC, FOLD THEN TENT IN HALF + BACK ON ITSELF.

2B. YOUR TENT SHOULD NOW RESEMBLE A HALF MOON SHAPE.



3A. BRING THE CURVED EDGE BACK ON ITSELF SO THAT YOU ARE LEFT WITH A RECTANGLE.

3B. THEN, FOLD IT IN HALF LENGTHWAYS.



4A. SMOOTHING + RELEASING ANY TRAPPED AIR AS YOU GO. BEGIN TO TIGHTLY ROLL THE TENT FORWARDS.

4B. ONCE COMPLETED, USE THE STRAPS TO SECURE THE ROLLED UP TENT + PLACE BACK INTO THE PROVIDED TENT BAG.



STORING YOUR TENT..

Store your tent away in a dry place, free of damp and excessive condensation. We would advise placing it in a high place, away from rodents!

CLEANING YOUR TENT



To remove any dirt, light marks or mud off your tent you will need to pitch it before cleaning. To tackle marks we advise a sot mop, a soft brush and sponge to apply either:

'NIKWAX TENT AND GEAR SOLARWASH' OR 'NIKWAX TECH WASH'

...before rinsing off with water.

To remove any dirt, light marks or mud off your tent you will need to pitch it before cleaning. If you're looking to wash the whole tent we advise mixing the cleaning agents above with water in a pump action pressure garden sprayer.

SHOP OUR
CLEANING
PRODUCTS



WATCH
DEMONSTRATION
VIDEO





REPROOFING YOUR TENT



Your tent will have a generous coating of our water, rot and UV repelling agent. Over time, as a result of heavy use or testing environments, your tent fabric may require a second coating to revive breathability and resistance to the elements.

This can be done by using a garden spray to apply the following agent:

'NIKWAX TENT AND GEAR SOLARWASH'

READ OUR FULL
MAINTENANCE
GUIDE



RETURNS POLICY

We are certain you are going to love your next tent, however, if you have a change of heart you are entitled to a refund or exchange within 14 days of receiving your item/s. Please note, unpackaged or used tents may be subject to this. To make your request, please complete the online returns form on our website:

www.boutiquecamping.com/return-form-i524

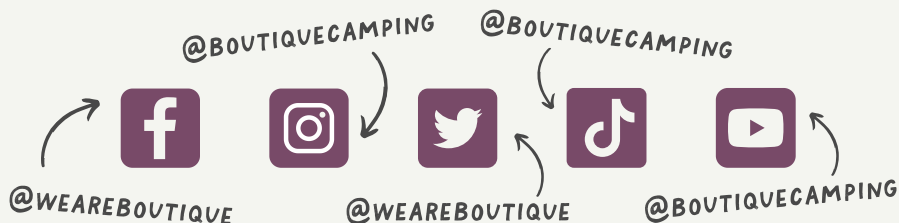
HAVE A CAMPING QUERY?



EMAIL US:
INFO@BOUTIQUECAMPING.COM
and WE'LL BE HAPPY TO ASSIST!





LET'S CONNECT!



We'd love to see where your adventure takes you!

Whether it's a reel, a pitching time lapse, or a stunning setup pic, let us and the world see! Don't forget to give us a follow and TAG us, your creation could be featured on our socials and website!

 www.boutiquecamping.com | +44 (0) 203 319 1315 | info@boutiquecamping.com

 www.belltent.com | +1(929) 334 3212 | info@belltent.com