

Boutique
Camping

WHERE WILL YOUR
ADVENTURE
TAKE YOU.

INSTRUCTION MANUAL



STAR EMPEROR BELL TENT

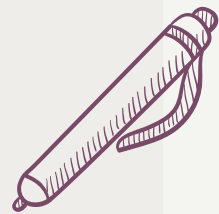


SCAN HERE
FOR VIDEO
TUTORIAL!



COMPONENTS CHECKLIST

- TENT WITH ATTACHED WEBBING STRAPS *and* GROUNDSHEET
- TENT BAG
- RUBBER Mallet
- FULL SET OF STEEL PEGS
- X2 CENTRE POLES
- XI CROSS BAR POLE
- XI A-FRAME WITH SCREW ON RAIN CAP
- XI FLEXI CANOPY POLE
- INSTRUCTION MANUAL
- SPARES BAG





GETTING TO KNOW YOUR TENT

ROLL UP WALLS

With 360° mesh netting for bug protection and extended ventilation.

INTERNAL MESH POCKETS

To store small belongings.

WEBBING STRAPS

- ✓ Minimise tripping hazards
- ✓ Can be adjusted for desired tension
- ✓ Use rebar pegs (grooved) to secure

MESH WINDOWS

To ventilate your tent and welcome a bug-free breeze, unzip the fabric layer from the inside of the tent.

If you want the windows fully open you'll have the option to unzip the mesh (middle) and outer fabric layers.

INSTALLING A STOVE IN YOUR TENT?



SCAN HERE!

PLASTIC LOOPS

To attach an inner tent or hang fairy lights!

FABRIC

Treated with UV, rot and water repelling agent.

INTEGRATED POLE LOOP

To hang a chandelier, inner tent, lighting or other decor!

LARGE INTEGRATED CANOPY

For extended shelter.

A-FRAME SPIKE WITH SCREW ON RAIN CAPS

Use to attach an extended 2m+ curved canopy or to hang bunting and fairy lights!

ARCHED HEM

To redirect rainpour.

ZIPPABLE GROUND SHEET

If pitching your tent as a stand-alone shelter, unzip the groundsheet AFTER the tent has been erected & use the toggle and loop system to hold the walls up.

ENTRANCE POINT

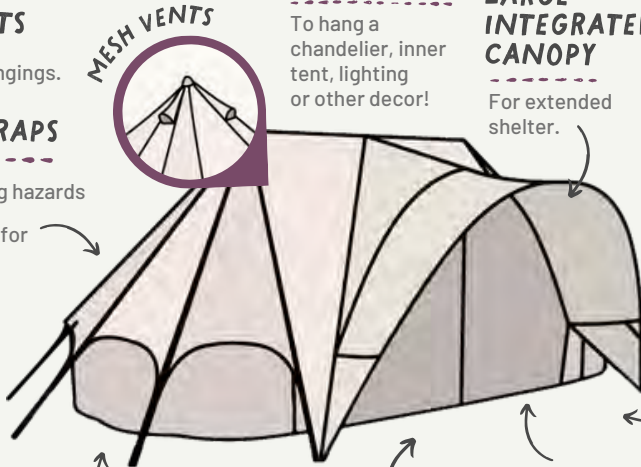
Create a seamless entry and use standard pegs (smooth) to flatten the groundsheets' entrance point.

CANOPY GUIDE STRAP

You can unclip this once pitched to avoid tripping hazards.

ELECTRIC HOOK UP FLAP

Use the savvy zipped-flap to safely thread electrical wires into your tents' living space.





PLOT PREPARATION + PITCH PERFECTION

ACHIEVING PITCH PERFECTION

- ✔ Ensure your plot is flat and bump free, uneven surfaces or hill tops may apply too much uneven tension and result in damage.
- ✔ Avoid pitching your tent under trees unless you have a tent protector cover or shelter.
- ✔ Before securing down the pegs, zip all doors closed.
- ✔ Kinks and creases in the fabric suggest that the tension in the tent is uneven and can result in damage. When pitching your tent, ensure that the poles are straight and guy ropes are adjusted accordingly.
- ✔ The groundsheet zip must be concealed and hidden by the skirt of the tent.

ONCE IT'S UP..

- ✔ Frequently check that the pegs are secured tightly and have not become loose, this is particularly important after wet weather as the grounds will become soft.
- ✔ Air your tent out daily to increase the ventilation. This can be done by opening the doors, windows (and if applicable) unzipping the groundsheet and rolling up the sides.
- ✔ If you spot any marks, dirt or mildew spots, tackle them right away to prevent the issue from staining or spreading.

WATERPROOFING *and* LEAK PREVENTION

On the first occasion that your tent experiences a heavy rainfall, although unlikely, you may find small leaks around the seams of the fabric. Do not worry, as this is normal!

Once it has fully dried out, the cotton will naturally shrink and close any holes to ensure your tent becomes completely watertight.

To completely avoid this when on your camping adventure, you can erect the tent in your garden (if possible) and hose it down with water.





PITCHING YOUR STAR EMPEROR BELL TENT

IF THE GROUNDS ARE DRY + YOU ARE STRUGGLING TO HAMMER YOUR PEGS INTO THE GROUND, DRENCH THE DRY AREA WITH WATER FIRST!

TOP TIP!



1

- 1A. UNPACK YOUR TENT + LAY IT OUT WITH THE GROUND SHEET FLOOR FACING.
- 1B. MAKE SURE THE GROUND IS FLAT + FREE FROM SHARP OBJECTS.
- 1C. FIND THE DOOR + ROTATE TO FACE THE DESIRED DIRECTION.

- 2A. LOCATE THE ELASTIC RINGS + THREAD THE STANDARD PEGS (SMOOTH) THROUGH THE RING + THE EYELET TO FIX YOUR BASE TO THE GROUND.



2

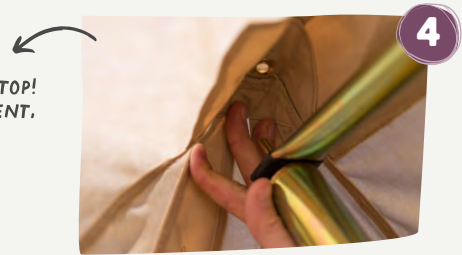


3

- 3A. LOCATE THE CROSS BAR + X2 CENTRE POLES, BRING THEM INSIDE THE TENT.
- 3B. PLACE THE HORIZONTAL BAR OVER THE SPIKE OF ONE OF THE CENTRE POLES.
- 3C. PUSH THE TENT UP USING THE POLE UNTIL IT'S VERTICAL FROM THE CONE DOWN TO THE GROUND SHEET.

- 4A. REPEAT WITH THE SECOND POLE

- 4B. MAKE SURE THE LOOP ON EACH POLE IS AT THE TOP! (YOU CAN USE THIS FOR HANGING AN INNER TENT, CHANDELIER OR SMALL BELONGINGS LATER).



4



5

- 5A. ASSEMBLE THE A-FRAME + PLACE INSIDE THE DOOR, WITH THE PLASTIC RAIN CAP UNSCREWED.
- 5B. POSITION THE SPIKE THROUGH THE EYELET AT THE TOP OF THE DOOR + FIT THE FEET INTO THE HOLDING POCKETS.
- 5C. TIE INTO PLACE + ON THE OUTSIDE OF THE TENT, SCREW THE RAIN CAP BACK ON TO THE PROTRUDING SPIKE.



PITCHING YOUR STAR EMPEROR BELL TENT



6A. ERECT THE FLEXI POLE + THREAD IT THROUGH THE SLEEVE OF THE INTEGRATED CANOPY.



7A. INSERT THE METAL PIN ON EACH SIDE OF THE POLE TO HOLD THE TENSION.

7B. ONCE BOTH PINS ARE IN, ZIP CLOSE THE DOOR + PEG DOWN THE FEET OF THE CANOPY USING THE REBAR PEGS (GROOVED).

8A. USING THE REBAR PEGS (GROOVED), SECURE THE X3 GUY ROPES ABOVE THE DOOR TO THE GROUND.

8B. ONCE YOUR CANOPY IS PEGGED DOWN + YOU'RE HAPPY WITH THE ARCH SHAPE, YOU CAN NOW UNCLIP THE GUIDE STRAP TO AVOID TRIPPING HAZARDS.



9A. ENSURE EACH WEBBING STRAP IS LOOSENEED 70-80%.

9B. STRETCH OUT THE WEBBING (FOLLOWING THE SEAM LINES) USE THE REBAR PEGS (GROOVED) TO PEG EACH STRAP INTO THE GROUND.



10A. ADJUST THE WEBBING GUY ROPES TO CREATE DESIRED TENSION UNTIL YOUR STAR EMPEROR BELL TENT LOOKS AS PICTURED ABOVE.



DRESSING YOUR STAR EMPEROR BELL TENT

HERE'S SOME INSPO!



RECOMMENDED BC ADD-ONS



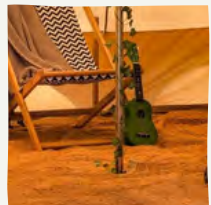
CENTRE POLE
TABLE



INNER TENT



CHANDELIER



MATTING



PACKING AWAY & STORING YOUR TENT

It is VITAL that your tent is only stored once it is bone dry. If you store your tent whilst it's damp or wet, it may be affected by mildew. This can result in deterioration of the tents' fabric.

It's perfectly fine to take down your tent whilst it is still wet. However, you **MUST** ensure to hang it up to dry within 48 hours. This can be achieved by hanging the tent on a washing line, or equivalent, and leaving it to air dry. Separating the groundsheet will speed up this process.

1



- 1A.** REMOVE ALL PEGS, YOU CAN USE YOUR HANDS, A PEG EXTRACTOR OR EVEN ANOTHER PEG.
- 1B.** IF PEGS ARE DIRTY, CLEAN BEFORE PUTTING THEM BACK IN THEIR BAG.
- 1C.** REMOVE POLES FROM THE TENT + IF NECESSARY, ALSO GIVE THEM A CLEAN AND TOWEL DRY.
- 1D.** KEEP THE CANVAS ON TOP OF THE GROUND SHEET + NOT IN CONTACT WITH THE GRASS/GROUND.

2A. WITHOUT STANDING ON THE CANVAS, FOLD THEN TENT IN HALF + BACK ON ITSELF. YOUR TENT SHOULD NOW RESEMBLE A HALF MOON SHAPE.

2B. THEN FOLD THE TWO LAYERS (CURVED EDGE) BACK ON ITSELF SO YOU'RE LEFT WITH A PANCAKE LIKE ROLL.

2



3



3A. NOW FOLD IT IN HALF LENGTHWAYS + SMOOTH OUT ANY TRAPPED AIR.

4



4A. SMOOTHING + RELEASING ANY TRAPPED AIR AS YOU GO, BEGIN TO TIGHTLY ROLL THE TENT FORWARDS.

4B. ONCE COMPLETED, USE THE STRAPS TO SECURE THE ROLLED UP TENT + PLACE BACK INTO THE PROVIDED TENT BAG.



STORING YOUR TENT..

Store your tent away in a dry place, free of damp and excessive condensation. We would advise placing it in a high place, away from rodents!

CLEANING YOUR TENT



To remove any dirt, light marks or mud off your tent you will need to pitch it before cleaning. To tackle marks we advise a snot mop, a soft brush and sponge to apply either:

'NIKWAX TENT AND GEAR SOLARWASH' OR 'NIKWAX COTTON PROOF'

...before rinsing off with water.

To remove any dirt, light marks or mud off your tent you will need to pitch it before cleaning. If you're looking to wash the whole tent we advise mixing the cleaning agents above with water in a pump action pressure garden sprayer.

SHOP OUR
CLEANING
PRODUCTS



WATCH
DEMONSTRATION
VIDEO





REPROOFING YOUR TENT



Your tent will have a generous coating of our water, rot and UV repelling agent. Over time, as a result of heavy use or testing environments, your tent fabric may require a second coating to revive breathability and resistance to the elements.

This can be done by using a garden spray to apply the following agents:

'NIKWAX TENT AND GEAR SOLARWASH' OR 'NIKWAX COTTON PROOF'



READ OUR FULL
MAINTENANCE
GUIDE



RETURNS POLICY

We are certain you are going to love your next tent, however, if you have a change of heart you are entitled to a refund or exchange within 14 days of receiving your item/s. Please note, unpackaged or used tents may be subject to this. To make your request, please complete the online returns form on our website:

www.boutiquecamping.com/return-form-i524

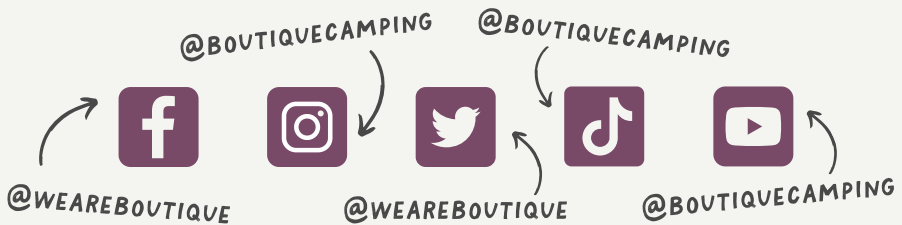
HAVE A CAMPING QUERY?



EMAIL US:
INFO@BOUTIQUECAMPING.COM
and WE'LL BE HAPPY TO ASSIST!



LET'S CONNECT!



We'd love to see where your adventure takes you!

Whether it's a reel, a pitching time lapse, or a stunning setup pic, let us and the world see! Don't forget to give us a follow and TAG us, your creation could be featured on our socials and website!

 www.boutiquecamping.com | +44 (0) 203 319 1315 | info@boutiquecamping.com

 www.belltent.com | +1(929) 334 3212 | info@belltent.com