



WHERE WILL YOUR  
ADVENTURE  
TAKE YOU...

INSTRUCTION MANUAL



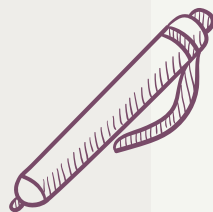
# BELL TENT PRO



SCAN HERE  
FOR VIDEO  
TUTORIALS!

# COMPONENTS CHECKLIST

- ☐ TENT WITH ATTACHED  
GUY ROPES *and* GROUND SHEET
- ☐ TENT BAG
- ☐ RUBBER Mallet
- ☐ FULL SET OF STEEL PEGS
- ☐ XI CENTRE POLE
- ☐ XI A-FRAME  
(WITH SCREW ON RAIN CAP)
- ☐ INSTRUCTION MANUAL
- ☐ SPARES BAG





# GETTING TO KNOW YOUR TENT



## FABRIC

Treated with fire retardant solution, UV, rot and water repelling agent.

## PLASTIC LOOPS

To attach an inner tent or hang fairy lights!

SEE MAINTENANCE AND TLC PAGE FOR TIPS ON CLEANING AND RE-PROOFING!

## INTERNAL MESH POCKET

To store small belongings.

## GUY ROPES

- ✓ Reflective to minimise tripping hazards
- ✓ Adjust via savvy toggles
- ✓ Use rebar pegs (grooved) to secure

## MESH WINDOWS

To ventilate your tent, unzip the fabric from the inside. (and the outside on front windows!).

## ROLL UP WALLS

With toggle and loop system.

## INSTALLING A STOVE IN YOUR TENT?



SCAN HERE!



## MESH VENTS



## INTEGRATED POLE LOOP

To hang a chandelier, inner tent, lighting or other decor!

## A-FRAME SPIKE WITH SCREW ON RAIN CAP/S

Use to attach a canopy or awning to hang bunting and fairy lights!

## ELECTRIC HOOK UP FLAP

Use the savvy zipped-flap to safely thread electrical wires into your tents' living space.

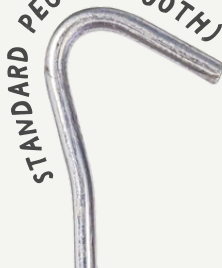
## ZIPPABLE GROUND SHEET

If pitching your tent as a stand-alone shelter, unzip the groundsheet AFTER the tent has been erected & use the toggle and loop system to hold the walls up.

## ENTRANCE POINT

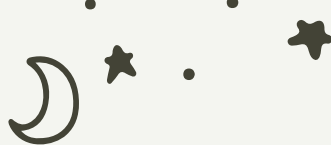
Create a seamless entry and use standard pegs (smooth) to flatten the groundsheets' entrance point.

STANDARD PEGS (SMOOTH)



REBAR PEGS (GROOVED)





# PLOT PREPARATION + PITCH PERFECTION

## ACHIEVING PITCH PERFECTION

- ✓ Ensure your plot is flat and bump free, uneven surfaces or hill tops may apply too much uneven tension and result in damage.
- ✓ Avoid pitching your tent under trees unless you have a tent protector cover or shelter.
- ✓ Pitching your tent on a groundsheet protector will not only guide you when erecting your tent, but it will also protect the groundsheet from dirt, water and condensation.
- ✓ Before securing down the pegs, zip all doors closed.
- ✓ Kinks and creases in the fabric suggest that the tension in the tent is uneven and can result in damage. When pitching your tent, ensure that the poles are straight and guy ropes are adjusted accordingly.
- ✓ The groundsheet zip must be concealed and hidden by the skirt of the tent.



## ONCE IT'S UP..

- ✓ Frequently check that the pegs are secured tightly and have not become loose, this is particularly important after wet weather as the grounds will become soft.
- ✓ Air your tent out daily to increase the ventilation. This can be done by opening the doors, windows (and if applicable) unzipping the groundsheet and rolling up the sides.
- ✓ If you spot any marks, dirt or mildew spots, tackle them right away to prevent the issue from staining or spreading.



## WATERPROOFING and LEAK PREVENTION

On the first occasion that your tent experiences a heavy rainfall, although unlikely, you may find small leaks around the seams of the fabric. Do not worry, as this is normal!



Once it has fully dried out, the cotton will naturally shrink and close any holes to ensure your tent becomes completely watertight.

To completely avoid this when on your camping adventure, you can erect the tent in your garden (if possible) and hose it down with water.





# PITCHING YOUR CLASSIC BELL TENT

IF THE GROUNDS ARE DRY + YOU ARE STRUGGLING TO HAMMER YOUR PEGS INTO THE GROUND, DRENCH THE DRY AREA WITH WATER FIRST!

**TOP TIP!**

1



**1A.** UNPACK YOUR TENT + LAY IT OUT WITH THE GROUND SHEET FLOOR FACING.

**1B.** MAKE SURE THE GROUND IS FLAT + FREE FROM SHARP OBJECTS.

**1C.** FIND THE DOOR + ROTATE TO FACE THE DESIRED DIRECTION.

**2A.** KEEPING THE TENT FABRIC ON TOP OF THE BASE, STRETCH OUT THE GROUND SHEET TO FORM A PERFECT CIRCLE.

**2B.** LOCATE THE ELASTIC RINGS + THREAD THE STANDARD PEGS (SMOOTH) THROUGH THE RING + THE EYELET TO FIX YOUR BASE TO THE GROUND.

2



3



**3A.** LOCATE THE CENTRE POLE + BRING INSIDE THE TENT.

**3B.** PUSH THE POLE UPWARDS INTO THE CONE (THIS WILL BE THE POLE END WITH THE INTEGRATED LOOP) + ERECT IT VERTICALLY.

**3C.** ENSURE THAT THE POLE IS STRAIGHT + LOCATED AT THE CENTRE POINTS OF BOTH THE GROUND SHEET + ROOF.

**4A.** FIX TOGETHER THE SEGMENTS OF THE A-FRAME.

**4B.** INSIDE THE TENT, POSITION THE POLE ALONG THE SEAM OF THE DOORWAY + PUSH THE SPIKE THROUGH THE HOLE FOUND AT THE TOP OF THE DOORWAY.

**4C.** SLOT THE FEET OF THE A-FRAME INTO THE POCKETS + SECURE INTO PLACE BY TIGHTLY KNOTTING TOGETHER THE TIES.

4





# PITCHING YOUR CLASSIC BELL TENT



**5A.** SCREW THE RAIN CAP ON TO THE PROTRUDING A-FRAME SPIKE/S.



**6A.** ZIP UP THE DOOR + UNKNOT TIES, AND PEG DOWN THE X3 GUY ROPES FOUND AT THE DOORWAY OF THE TENT.



**7A.** USING THE REBAR PEGS (GROOVED), UNKNOT AND SECURE EACH REMAINING GUY ROPE TO THE GROUND WITH A MINIMUM OF 1M DISTANCE FROM THE TENT.

**7B.** ENSURE THEY'RE ALIGNED WITH THE WALL SEAMS.

**8A.** ADJUST THE GUY ROPE SLIDERS SO YOU HAVE APPROX. 50CM OF LOOP TO THE PEG.

**8B.** MAKE SURE THE TENT IS SYMMETRICAL + THE TENSION IS EVENLY SPREAD.



**9A.** ONCE ALL THE PEGS ARE DOWN, CONTINUE TO ADJUST THE GUY ROPES UNTIL YOUR BELL TENT PRO LOOKS AS PICTURED.



**10A.** OUR TENTS COME WITH ZIPPED IN GROUND SHEETS. TO DETACH IT, UNHOOK THE ELASTIC RINGS FROM THE PEGS + UNZIP THE X2 ZIPS FROM FRONT TO BACK.

**10B.** FOR EXTRA VENTILATION OR AN OPEN PLAN PITCH, USE THE TOGGLE + LOOP SYSTEM TO HOLD THE WALLS UP.

# DESIGNED FOR MAXIMUM VENTILATION



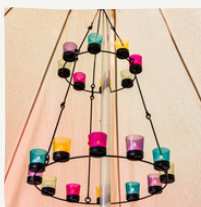
## RECOMMENDED BC ADD-ONS



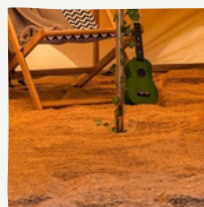
FLASHING KIT



WOOD BURNING  
STOVE



DOUBLE-TIER  
CHANDELIER



MATTING





# PACKING AWAY & STORING YOUR TENT

It is VITAL that your tent is only stored once it is bone dry. If you store your tent whilst it's damp or wet, it may be affected by mildew. This can result in deterioration of the tents' fabric.

It's perfectly fine to take down your tent whilst it is still wet. However, you **MUST** ensure to hang it up to dry within 48 hours. This can be achieved by hanging the tent on a washing line, or equivalent, and leaving it to air dry. Separating the groundsheet will speed up this process.

1



- 1A.** REMOVE ALL PEGS. YOU CAN USE YOUR HANDS, A PEG EXTRACTOR OR EVEN ANOTHER PEG.
- 1B.** IF PEGS ARE DIRTY, CLEAN BEFORE PUTTING THEM BACK IN THEIR BAG.
- 1C.** REMOVE POLES FROM THE TENT + IF NECESSARY, ALSO GIVE THEM A CLEAN AND TOWEL DRY.
- 1D.** KEEP THE CANVAS ON TOP OF THE GROUND SHEET + NOT IN CONTACT WITH THE GRASS/GROUND.

**2A.** WITHOUT STANDING ON THE CANVAS, FOLD THEN TENT IN HALF + BACK ON ITSELF.

**2B.** YOUR TENT SHOULD NOW RESEMBLE A HALF MOON SHAPE.

2



3



**3A.** BRING THE CURVED EDGE BACK ON ITSELF SO THAT YOU ARE LEFT WITH A RECTANGLE.

**3B.** THEN, FOLD IT IN HALF LENGTHWAYS.

4



**4A.** SMOOTHING + RELEASING ANY TRAPPED AIR AS YOU GO. BEGIN TO TIGHTLY ROLL THE TENT FORWARDS.

**4B.** ONCE COMPLETED, USE THE STRAPS TO SECURE THE ROLLED UP TENT + PLACE BACK INTO THE PROVIDED TENT BAG.



## STORING YOUR TENT..

Store your tent away in a dry place, free of damp and excessive condensation. We would advice placing it in a high place, away from rodents!



# CLEANING YOUR TENT



To remove any dirt, light marks or mud off your tent you will need to pitch it before cleaning. To tackle marks we advise a sot mop, a soft brush and sponge to apply either:

**'NIKWAX TENT AND GEAR SOLARWASH' OR 'NIKWAX COTTON PROOF'**

...before rinsing off with water.

To remove any dirt, light marks or mud off your tent you will need to pitch it before cleaning. If you're looking to wash the whole tent we advise mixing the cleaning agents above with water in a pump action pressure garden sprayer.

SHOP OUR  
CLEANING  
PRODUCTS



WATCH  
DEMONSTRATION  
VIDEO





# REPROOFING YOUR TENT



Your tent will have a generous coating of our water, rot and UV repelling agent. Over time, as a result of heavy use or testing environments, your tent fabric may require a second coating to revive breathability and resistance to the elements.

This can be done by using a garden spray to apply the following agents:

**'NIKWAX TENT AND GEAR SOLARWASH' OR 'NIKWAX COTTON PROOF'**

READ OUR FULL  
MAINTENANCE  
GUIDE



## RETURNS POLICY

We are certain you are going to love your next text, however, if you have a change of heart you are entitled to a refund or exchange within 14 days of receiving your item/s. Please note, unpackaged or used tents may be subject to this. To make your request, please complete the online returns form on our website:

[www.boutiquecamping.com/return-form-i524](http://www.boutiquecamping.com/return-form-i524)

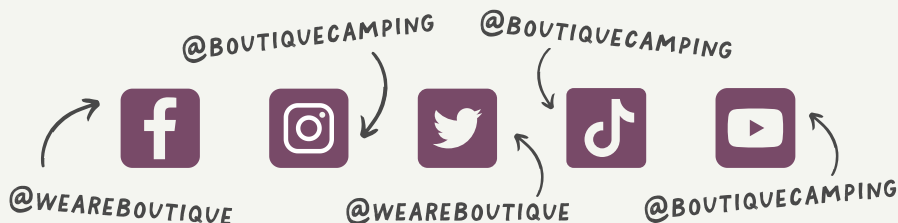
# HAVE A CAMPING QUERY?



EMAIL US:  
[INFO@BOUTIQUECAMPING.COM](mailto:info@boutiquecamping.com)  
and WE'LL BE HAPPY TO ASSIST!



## LET'S CONNECT!



We'd love to see where your adventure takes you!

Whether it's a reel, a pitching time lapse, or a stunning setup pic, let us and the world see! Don't forget to give us a follow and TAG us, your creation could be featured on our socials and website!

[www.boutiquecamping.com](http://www.boutiquecamping.com) | +44 (0) 203 319 1315 | [info@boutiquecamping.com](mailto:info@boutiquecamping.com)

 +1 (929) 334 3212