



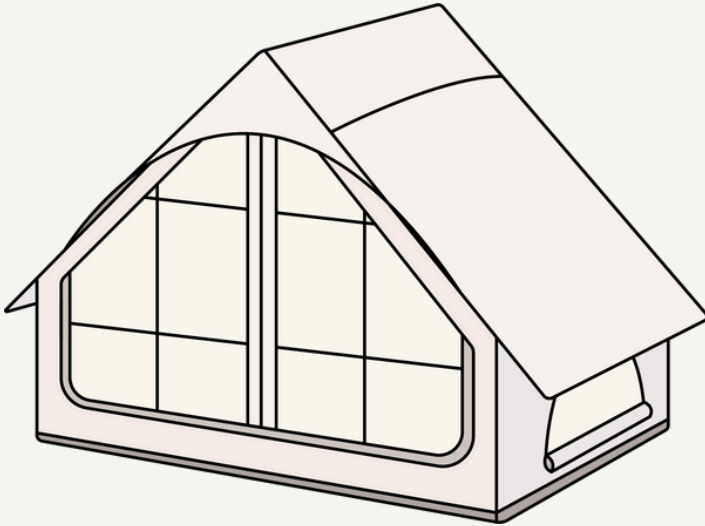
• WHERE WILL YOUR
ADVENTURE
TAKE YOU... •

• INSTRUCTION MANUAL •



VELA AIR TENT

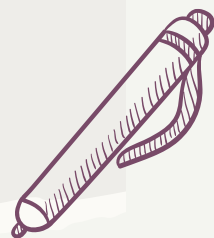
OXFORD 100GSM

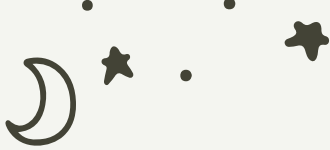


SCAN HERE
FOR VIDEO
TUTORIAL! **

COMPONENTS CHECKLIST

- ☐ TENT WITH ATTACHED GUY
ROPES and GROUNDSHEET
- ☐ FULL SET OF STEEL PEGS
- ☐ TENT BAG
- ☐ Mallet
- ☐ PUMP
- ☐ TARP POLE
- ☐ REPAIR KIT
- ☐ INSTRUCTION MANUAL





PLOT PREPARATION + PITCH PERFECTION

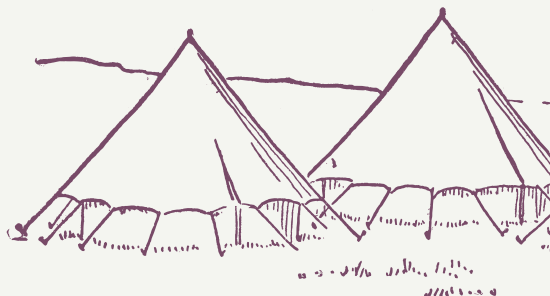


ACHIEVING PITCH PERFECTION

- ✓ Ensure your plot is flat and bump free, uneven surfaces or hill tops may apply too much uneven tension and result in damage.
- ✓ Avoid pitching your tent under trees unless you have a tent protector cover or shelter.
- ✓ Pitching your tent on a groundsheet protector will not only guide you when erecting your tent, but it will also protect the groundsheet from dirt, water and condensation.
- ✓ Before securing down the pegs, zip all doors closed.
- ✓ Kinks and creases in the fabric suggest that the tension in the tent is uneven and can result in damage. When pitching your tent, ensure that the poles are straight and guy ropes are adjusted accordingly.
- ✓ The groundsheet zip must be concealed and hidden by the skirt of the tent.

ONCE IT'S UP..

- ✓ Frequently check that the pegs are secured tightly and have not become loose, this is particularly important after wet weather as the grounds will become soft.
- ✓ Air your tent out daily to increase the ventilation. This can be done by opening up the doors and windows.
- ✓ If you spot any marks, dirt or mildew spots, tackle them right away to prevent the issue from staining or spreading.





IF THE GROUNDS ARE DRY + YOU ARE STRUGGLING TO HAMMER YOUR PEGS INTO THE GROUND, DRENCH THE DRY AREA WITH WATER FIRST!

TOP TIP!



PITCHING YOUR INFLATABLE RIDGE TENT

1



1A. UNPACK YOUR TENT + LAY IT OUT WITH THE GROUND SHEET FLOOR FACING.

1B. MAKE SURE THE GROUND IS FLAT + FREE FROM SHARP OBJECTS.

1C. FIND THE DOOR + ROTATE TO FACE THE DESIRED DIRECTION.

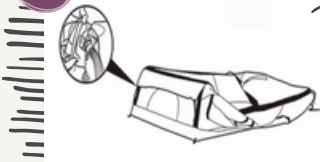
2A. KEEPING THE TENT FABRIC ON TOP OF THE BASE, STRETCH OUT THE GROUND SHEET.

2B. PEG DOWN THE GROUND SHEET.

2



3



3A. CONNECT THE PUMP TO THE AIR HOLES OF THE TENT.

3B. START INFLATING THE COLUMN. OBSERVE THE BAROMETER, WHEN THE INFLATION FRAME REACHES THE SPECIFIED PRESSURE (<7PSI), STOP THE INFLATION.

4A. ONCE FULLY INFLATED AND THE AIR IS DISTRIBUTED EVENLY AROUND THE TUBES, WITH A 7PSI READING ON THE BAROMETER, PLEASE CLOSE THE NOZZLE PROTECTION COVER.

4



5



5A. SECURE THE TENT WITH GUY ROPES AND PEGS PROVIDED.



PACKING AWAY & STORING YOUR TENT

It is VITAL that your tent is only stored once it is bone dry. If you store your tent whilst it's damp or wet, it may be affected by mildew. This can result in deterioration of the tents' fabric.

It's perfectly fine to take down your tent whilst it is still wet. However, you MUST ensure to hang it up to dry within 48 hours. This can be achieved by hanging the tent on a washing line, or equivalent, and leaving it to air dry. Separating the groundsheet will speed up this process.

AFTER USE:

Connect the air pump to the tent inflating port, open the air discharge function, and release all the gas in the inflating frame. During the venting process, the aerated frame can be properly pressed to accelerate the gas discharge.

FOLDING THE TENT:

Fold the deflated tent according to the original folding way, and try to keep it neat and compact. When folding, be careful not to over-bend the inflatable frame to avoid damage.

STORING ACCESSORIES:

Arrange the steel pegs, ropes, air pump and other accessories and put them into the tent's storage bag. At the same time, check whether the repair package is complete, and supplement it in time if there is anything missing.

STORING YOUR TENT:

Store your tent away in a dry place, free of damp and excessive condensation. We would advise placing it in a high place, away from rodents!



CLEANING YOUR TENT



To remove any dirt, light marks or mud off your tent you will need to pitch it before cleaning. To tackle marks we advise a sot mop, a soft brush and sponge to apply either:

'NIKWAX TENT AND GEAR SOLARWASH' OR 'NIKWAX TECH WASH'

...before rinsing off with water.

To remove any dirt, light marks or mud off your tent you will need to pitch it before cleaning. If you're looking to wash the whole tent we advise mixing the cleaning agents above with water in a pump action pressure garden sprayer.

SHOP OUR
CLEANING
PRODUCTS



WATCH
DEMONSTRATION
VIDEO



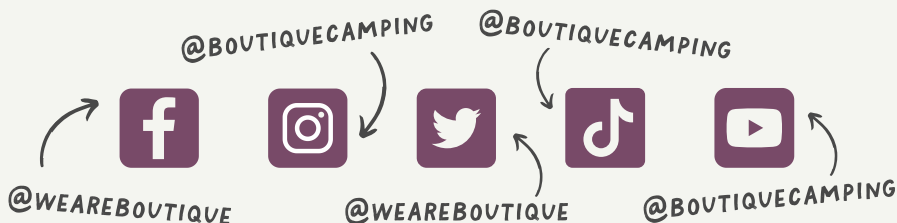
A person in a black shirt and shorts is pushing a golf cart through a dense, lush forest. The cart is loaded with a large, light-colored bag. The forest is filled with various green plants, including ferns and broad-leafed shrubs. The scene is captured from behind the person, showing them walking away into the woods. The overall atmosphere is serene and natural.

HAVE A CAMPING QUERY?

EMAIL US:
[INFO@BOUTIQUECAMPING.COM](mailto:info@boutiquecamping.com)
and WE'LL BE HAPPY TO ASSIST!



LET'S CONNECT!



We'd love to see where your adventure takes you!

Whether it's a reel, a pitching time lapse, or a stunning setup pic, let us and the world see! Don't forget to give us a follow and TAG us, your creation could be featured on our socials and website!

🇬🇧 www.boutiquecamping.com | +44 (0) 203 319 1315 | info@boutiquecamping.com

🇺🇸 www.belltent.com | +1(929) 334 3212 | info@belltent.com